



# Buglawton Primary School

Be the Best We Can

Topic: Drawing

Subject: Art

Year: 3

Term: Spring

### What should I already know?

I can use different pencil types in my drawings..

I can use pattern and line to create texture...

I can create drawings from observation...

I can use key vocabulary to demonstrate my knowledge and understanding in this strand...

I can answer key questions about Picasso and make links to my own work...

### What will I know and be able to do by the end of the unit?

I can use shading to represent light and dark...

I can select the correct pencil type...

I know the difference between artificial and natural light...

I can show the effect of light and shadow in my drawing...

I can develop close observational drawings..

I can record my observations in sketchbooks...

I can answer key questions about artefacts and make links to my own work...

### Agreed Real-Life Outcome

Lowry inspired drawing

### Previously Visited Vocabulary

#### Straight Line



A line with no bends or curves.

#### Wavy Line



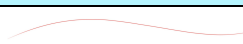
A line that is not straight.

#### Sharp Line



A clearly defined line.

#### Smooth Line



A line drawn with minimal pressure placed on the pencil.

### Key Vocabulary

#### Artificial Light



Light which is created by humans.

#### Natural Light



Light which is produced by the sun

#### Shadow



Used to define objects in drawings.

#### Thick Line



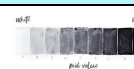
Give structure and weight to a drawing.

#### Ink



Used to create drawings, traditionally black or brown in colour.

#### Tone



the lightness or darkness of a colour

### Movement



The path the viewers eyes takes through a work of art.

### Key Art

Lowry



